

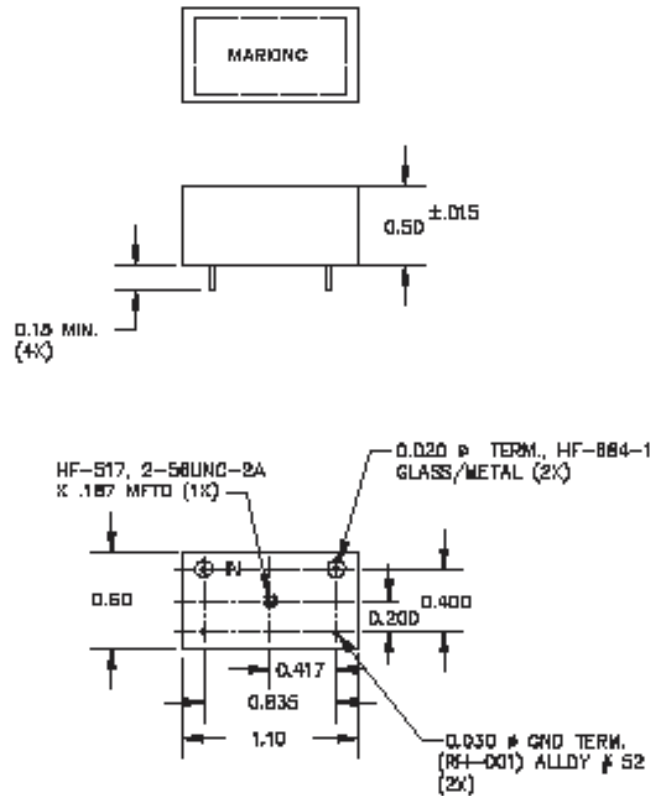


Crystal Bandpass Filter

Part Number: AM121.5CR164

Center Frequency:	121.5MHz
3 dBc Band Width:	+/-50KHz min
Insertion Loss:	6.0dB max
Pass Band Return Loss @ Fo:	-10dB min
Pass Band Ripple:	1.0dB max
30 dBc Bandwidth:	+/-100KHz max
45 dBc:	+/-130KHz max
Input Power:	0dBm(+10dB goal) 10dBm without damage, 0dBm operating
Operating Temperature:	-20 deg C to +70 deg C
Impedance:	50 Ohms

Outline Drawing:





Crystal Bandpass Filter

Part Number: AM121.5CR164

Response Plot:

