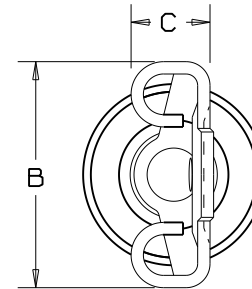
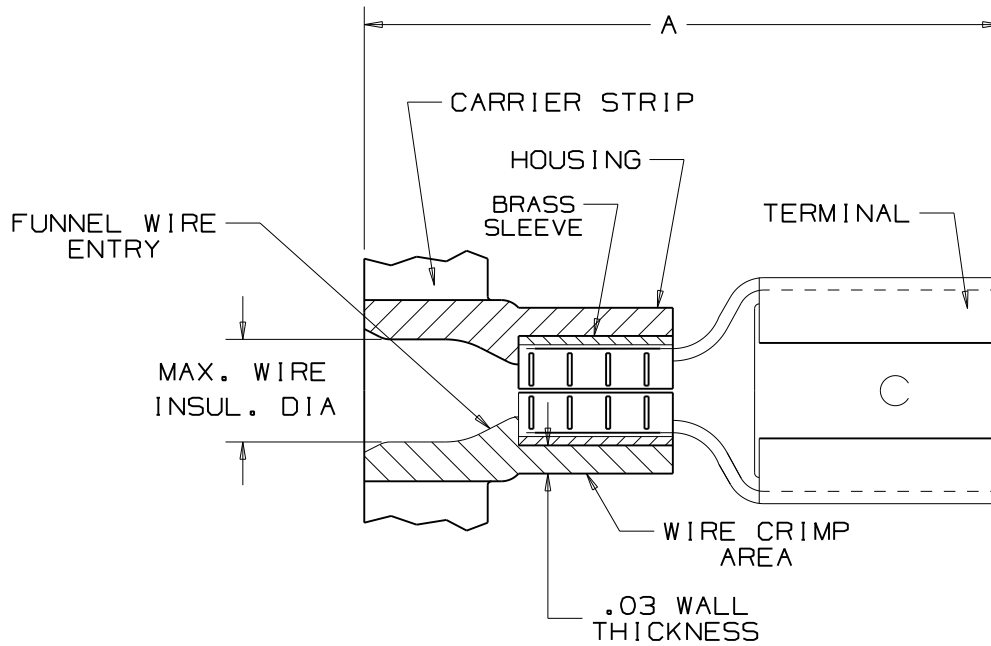


THIS COPY IS PROVIDED ON A RESTRICTED BASIS AND IS NOT TO BE USED IN ANY WAY DETRIMENTAL TO THE INTERESTS OF PANDUIT CORP.

NOTES:

1. 600 V MAX VOLTAGE RATING.  
221° F (105°) MAX TEMPERATURE RATING.  
STRANDED COPPER WIRE ONLY.
2. SEE [www.panduit.com](http://www.panduit.com) FOR PART NUMBER SUFFIX DESIGNATION FOR PACKAGE SIZE.
3. MATERIAL:  
A. STAMPING: CDA-260 BRASS, TIN PLATED  
B. HOUSING: PVC
4. DIMENSIONS IN BRACKETS ARE IN mm OR mm?
5. WIRE STRIP LENGTH  $11/32 \begin{matrix} +1/32 \\ -0 \end{matrix}$



**RU**<sup>®</sup>  
RECOGNIZED  
E78522

**SA**  
CERTIFIED  
LR31212

TOOL CHART - RECOMMENDED

PRESSES: CP-851, CP860, CP-861,  
CP-870, CP-862

PART NUMBER	TAB SIZE	WIRE RANGE AWG	COLOR	MAX. INSUL.	DIMENSIONS in.			CA-800/CA9 APPLICATOR DIE INSERTS
					A $\pm .03$	B $\pm .02$	C $\pm .02$	
DV10-250C-2K	.250 X .032 (6.4 X 0.8)	12-10	YELLOW	.23 (5.8)	.95 (24.1)	.29 (7.4)	.12 (3.1)	CD-800-3 CD9-3B

03	8/11	SHOR	UPDATED UL SYMBOL, MAX. INSULATION, REMOVED PACKAGE SIZES, MODIFIED NOTE #2			<b>PANDUIT</b> CORP.	TINLEY PARK, ILLINOIS		
02	7/03	KLFU	ADDED INTERNAL SERRATIONS ADDED CP-862, CD9 & CA9 TO CHART						
01	7/98	TM	ADDED AGENCY APPROVALS	JM	LA	FEMALE DISCONNECT FOR COMPRESSOR TABS, VINYL INSULATED, .250 x .032			
00	10/97	TM	RELEASED	DH	LA				
REV	DATE	BY	DESCRIPTION	PM	CUST	DRAWN BY JKD	CHK'D	SCALE NONE	DRAWING NO./CAD FILENAME A41654