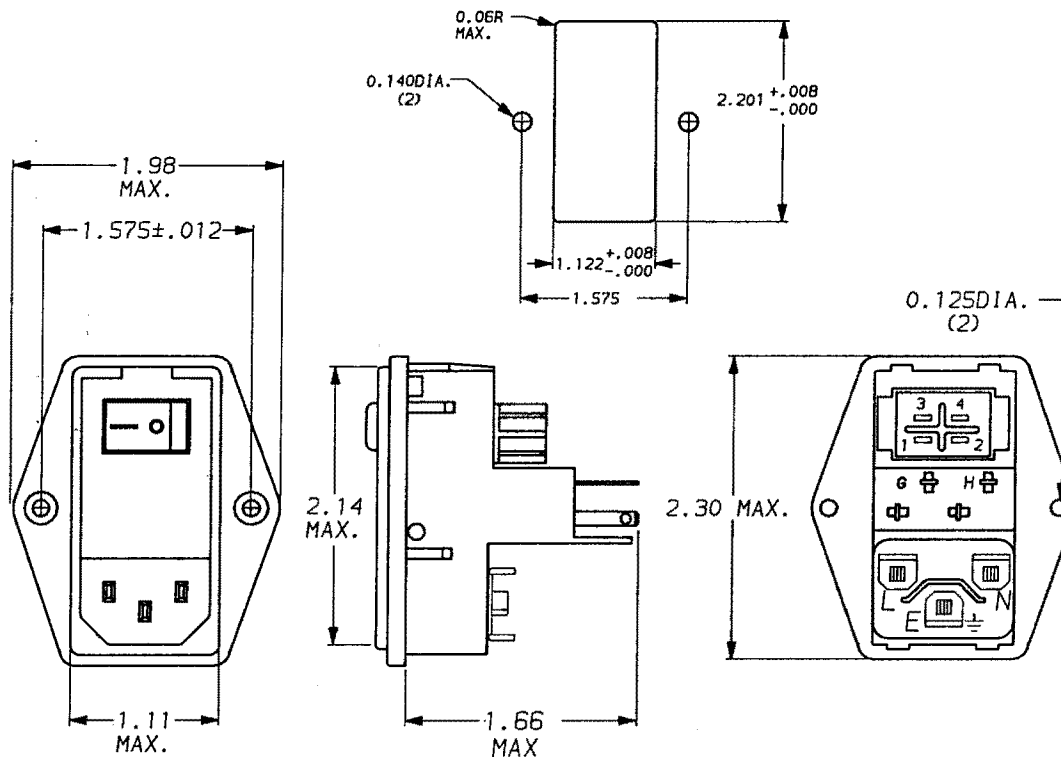


DESCRIPTION	APPROVED BY/DATE	REV
	C. Weathers 9-23-91	0
ECO-09-026495	AEG 10DEC09	A1

RECOMMENDED PANEL CUTOUT
(NOT TO SCALE)



SAFETY ORGANIZATION(S):

THIS MODULE HAS BEEN FORMALLY RECOGNIZED, CERTIFIED OR APPROVED BY THE LISTED AGENCY. THEREFORE, ALL TEST/REQUIREMENTS SPECIFIED IN THE LATEST REVISION OF THE FOLLOWING AGENCY STANDARDS HAVE BEEN MET:

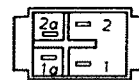
UL, CSA, VDE, SEV, SEMKO, DEMKO, NEMKO, FINLAND, NETHERLANDS, & ITALY

SPECIFICATIONS:

FUSE (5 X 20 MM OR 6,3 X 32 MM): MAX 6,3 AMP
(MODULE ACCEPTS EITHER ONE OR TWO FUSES)
STANDARD RATING: 10 A 250 VAC
UL 498/CSA 22.2 RATING: 6 A 250 VAC
MAX PIN TEMPERATURE: 65°C
TESTING VOLTAGE TO ACCESSIBLE SURFACES: 4000 VAC
SUITABLE FOR APPLIANCE CLASS: I
INSULATION RESISTANCE: >10 MΩ

NOTE: ALL BACKPLATE TERMINALS ARE .110 FASTONS EXCEPT SWITCH TERMINALS WHICH ARE .187 FASTONS.

⚠ OBSOLETE PARTS: OBSOLETE CIS STREAMLINING PER D.RENAUD/D.SINISI



ALTERNATE SWITCH

⚠ OBSOLETE 6609121-1
1600424-4

This document is proprietary to CORCOM INC. and is not to be reproduced nor used for manufacturing purposes except on CORCOM's order or prior written consent.

TOLERANCE EXCEPT AS NOTED DECIMAL: .XXX .XX .X ANGLES ENGLISH: METRIC: ± —		corcom LIBERTYVILLE, IL 60048	
MATERIAL: AS SUPPLIED		POWER ENTRY MODULE	
FINISH: AS SUPPLIED		SCALE NTS DATE 9-19-91 DRG. NO. 6EL1S.A1	REV. A1
		DRW. BY CFW ORIGINATOR CFW	