

CAT 5e patch panels

- Category 5e, according to EIA/TIA 568 and ISO/IEC 11801
- Suitable for up to 100 MHz
- Housing and screen cover of 1.2 mm sheet steel
- 8P8C RJ45 sockets
- Prepared for 19" installation 1U, 32 and 48 port 2 U
- Cable installation via LSA strips, color-coded as per EIA/TIA 568 A & B
- Screw-type strain relief, metal braid pillows
- Fixing option for cable ties, central grounding



DN-91524U

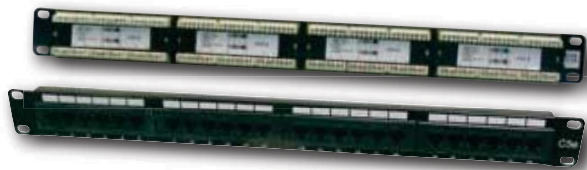


DN-91524S

	unshielded	shielded
16-port-1U	DN-91516U 241454	DN-91516S 241515
24-port-1U	DN-91524U 241461	DN-91524S 241522
48-port-2U	DN-91548U 241478	

CAT 6 patch panels

- Category 6, according to performance class, for up to 250 MHz, EIA/TIA 568 & ISO/IEC 11801
- 3P certified, permanent & channel link certified.
- Housing and screen cover of 1.2 mm sheet steel
- 8P8C RJ45 sockets
- Prepared for 19" installation 1U, (32 and 48 port 2 U)
- Cable installation via LSA strips, color-coded as per EIA/TIA 568 A & B
- Screw-type strain relief, metal braid pillows, fixing option for cable ties additional



DN-91624U



DN-91624S

	unshielded	shielded
16-port-1U	DN-91616U 241546	DN-91616S 241607
24-port-1U	DN-91624U 241553	DN-91624S 241614
32-port-2U	DN-91632U 241676	
48-port-2U	DN-91648U 241560	

Active
Network Components

Passive
Network Components

Fiber Optic
Network Components

Datacom
KVM Switches

USB
and Firewire

Cables
and Adapters

SATA + SCSI
Products

Computer
Accessory Products

Notebook
Accessory Products

Multimedia
Products