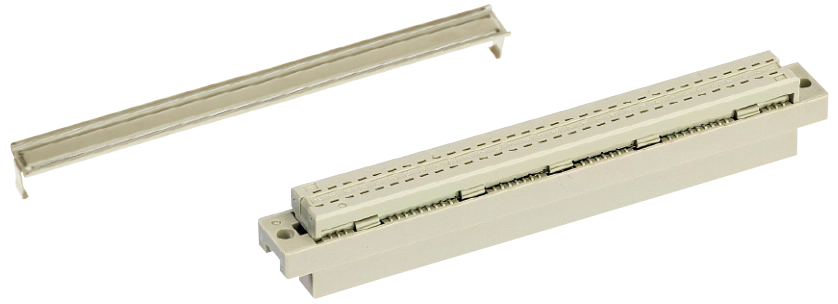


Number of contacts

64



Female connectors

DIN Signal
up to 2 A

Identification	No. of contacts	Part number	Drawing	Dimensions in mm
Female connector for insulation displacement	64	Performance level 2 ¹⁾ 09 03 264 6828		
		Performance level 3 ¹⁾ 09 03 264 7828		
Strain relief (metal)		09 03 000 9940		
Panel cut out				Mateable with 3 row male connector type C, no female contacts in the middle row
Flat cable AWG 28/7				²⁾ Termination area spacing = 508 mm Important: always store reels vertically Wire (tinned) Cu Gauge AWG 28/7 0.089 mm ² Insulation material as per UL style PVC
Round flat cable ³⁾				³⁾ Termination area spacing = 100 mm
Bench press Base plate		09 99 000 0114 09 99 000 0150		
Cable cutter		09 99 000 0116		
Spare parts				
Blade		09 99 000 0179		
Cutting plate		09 99 000 0180		



Further components and accessories for insulation displacement see interface catalogue, chapter 32

¹⁾ acc. to IEC 60 603-2